

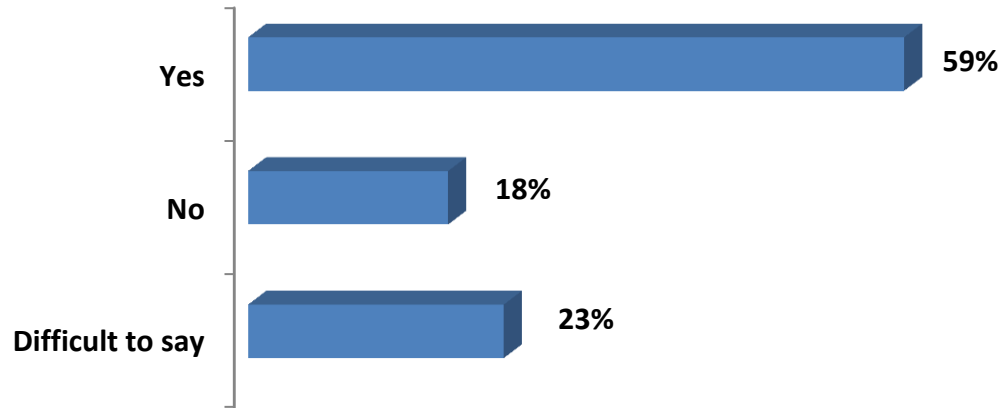
European Economic and Social Committee, “Lithuania in the driving seat of European integration: a fresh look at Europe”, Vilnius, October 23, 2013

Vladas Gaidys

Lithuanian Center for Social Research

Attitudes towards Membership in European Union in Lithuania: Public Opinion Polls

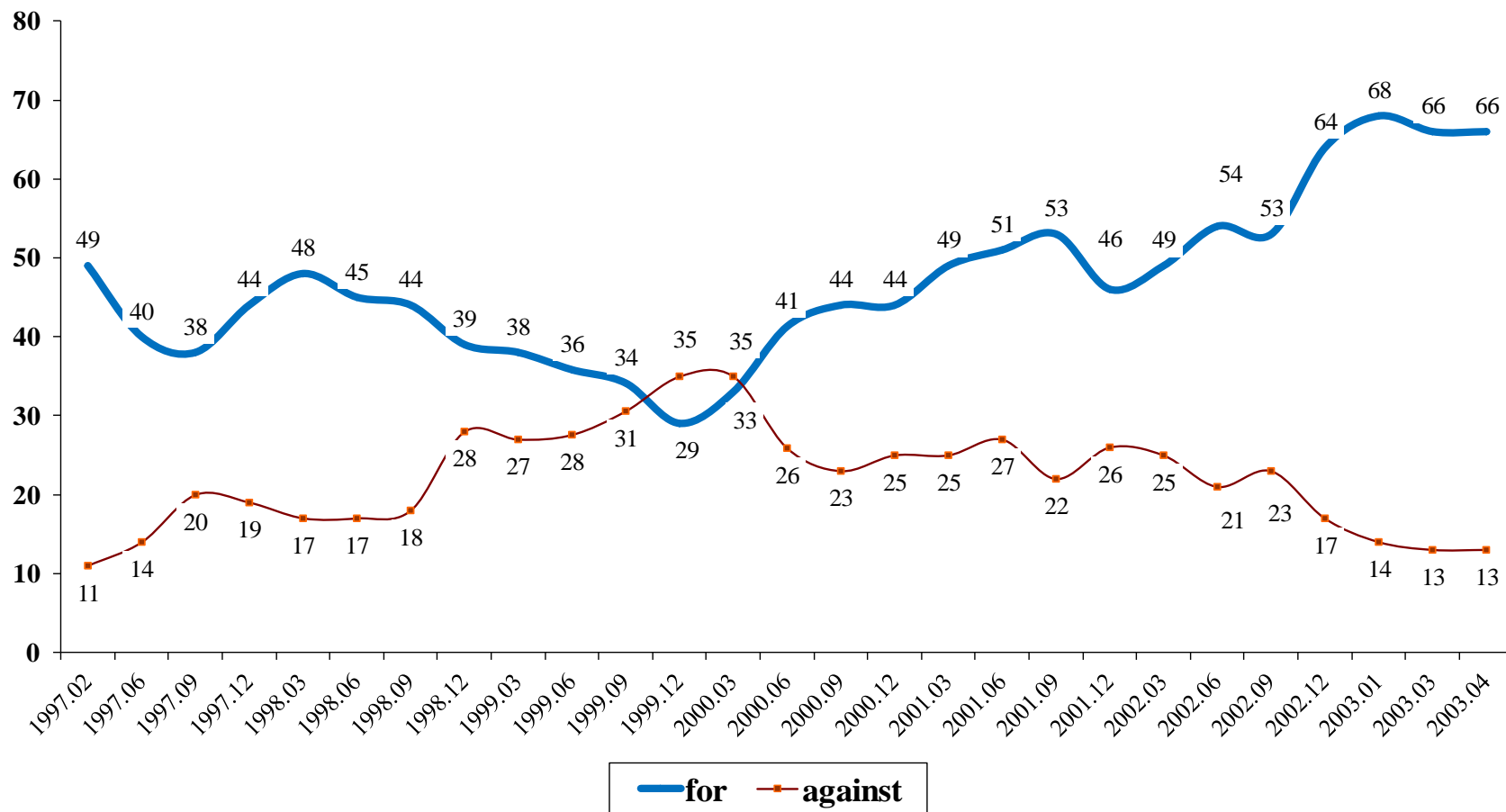
Do you support Lithuania's membership in the European Union?



Support:	
University education	71%
18 – 29 age group	77%

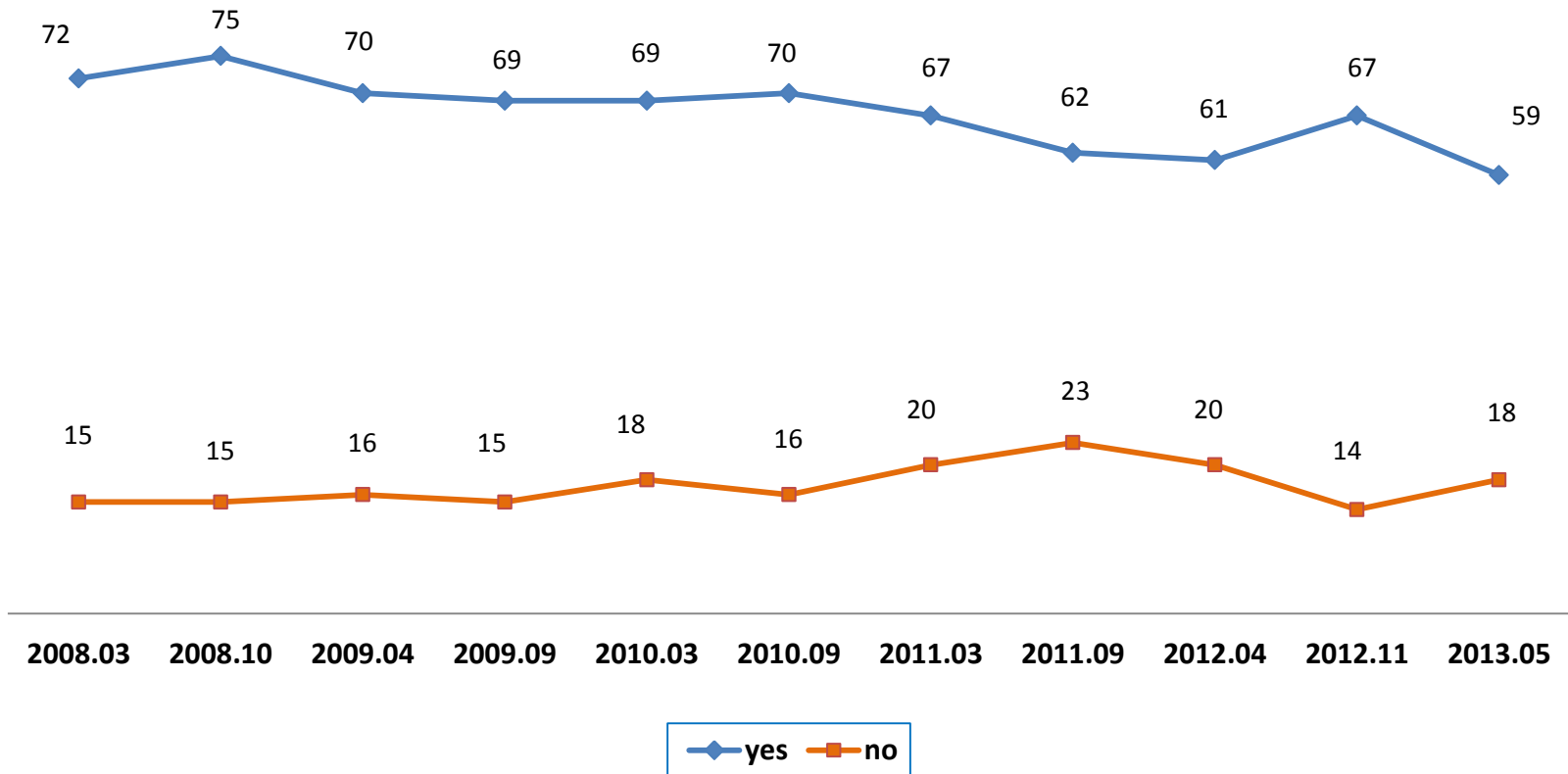
May 2013
Public Opinion Research Center “Vilmorus”

Attitudes towards membership: 1997-2003, %



Public Opinion Research Center "Vilmorus"

Do you support membership in the European Union? (2008-2013)



Public Opinion Research Center “Vilmorus”

Why do you support Lithuania's membership in the European Union? (open ended question, % from all respondents)

Financial/ economic support from the EU	30%
Freedom of movement	30%
Possibility to work abroad	13%
Education abroad	6%
Open European market	5%
More different possibilities	3%
Because of Lithuania's security	3%
It isn't possible to survive alone	2%
We are oriented to the West	2%

“Vilmorus”, May 2013

Why you don't support Lithuania's membership in the European Union? (open ended question, % from all respondents)

We are not equal	6%
Life didn't improve	2%
Better to be independent state	2%
Big state's debt	2%
Life is deteriorating	2%
Emigration	2%
Losing national identity	1%
Against euro	1%

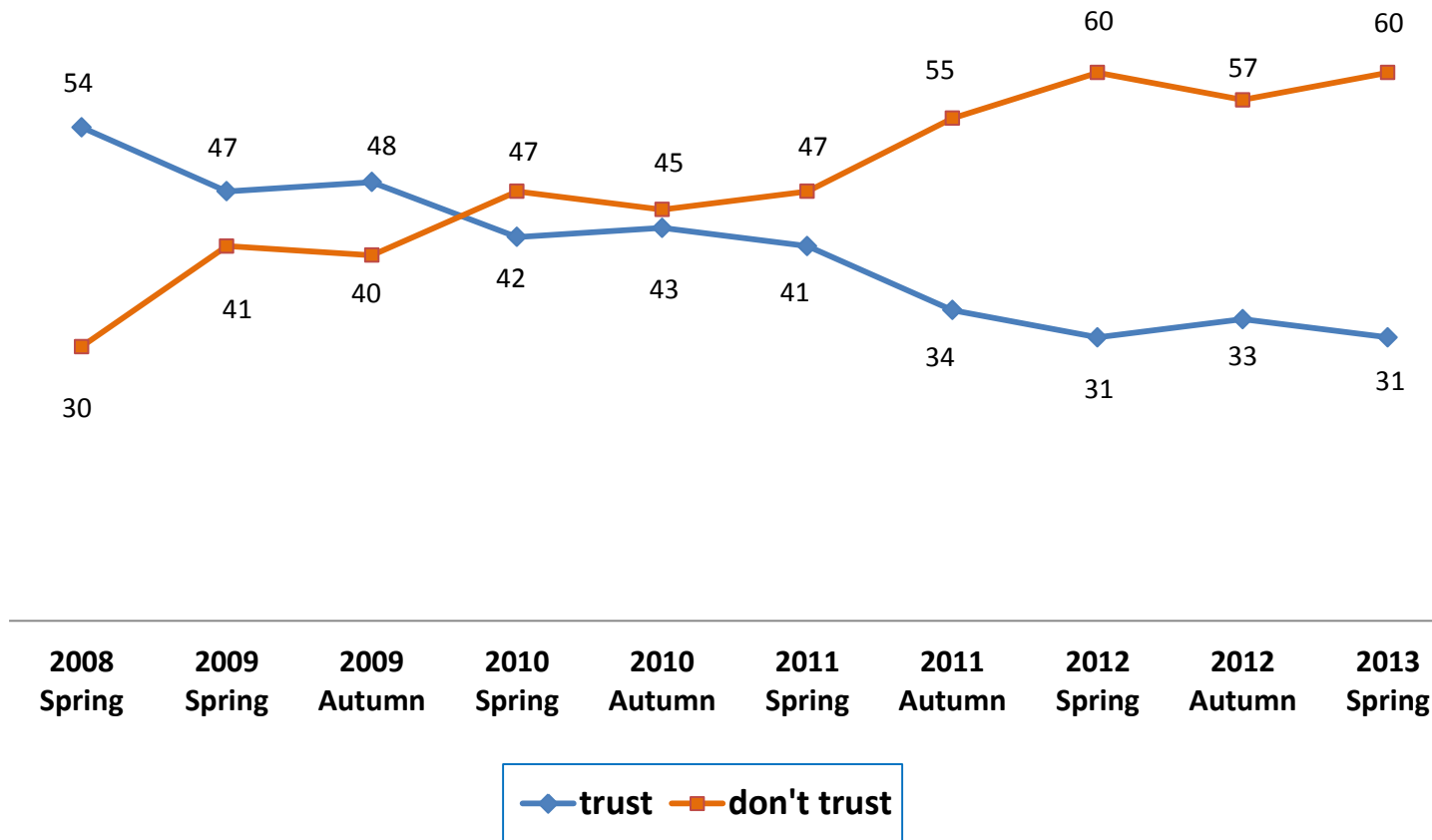
“Vilmorus”, May 2013

Tend to trust or tend not to trust the European Union

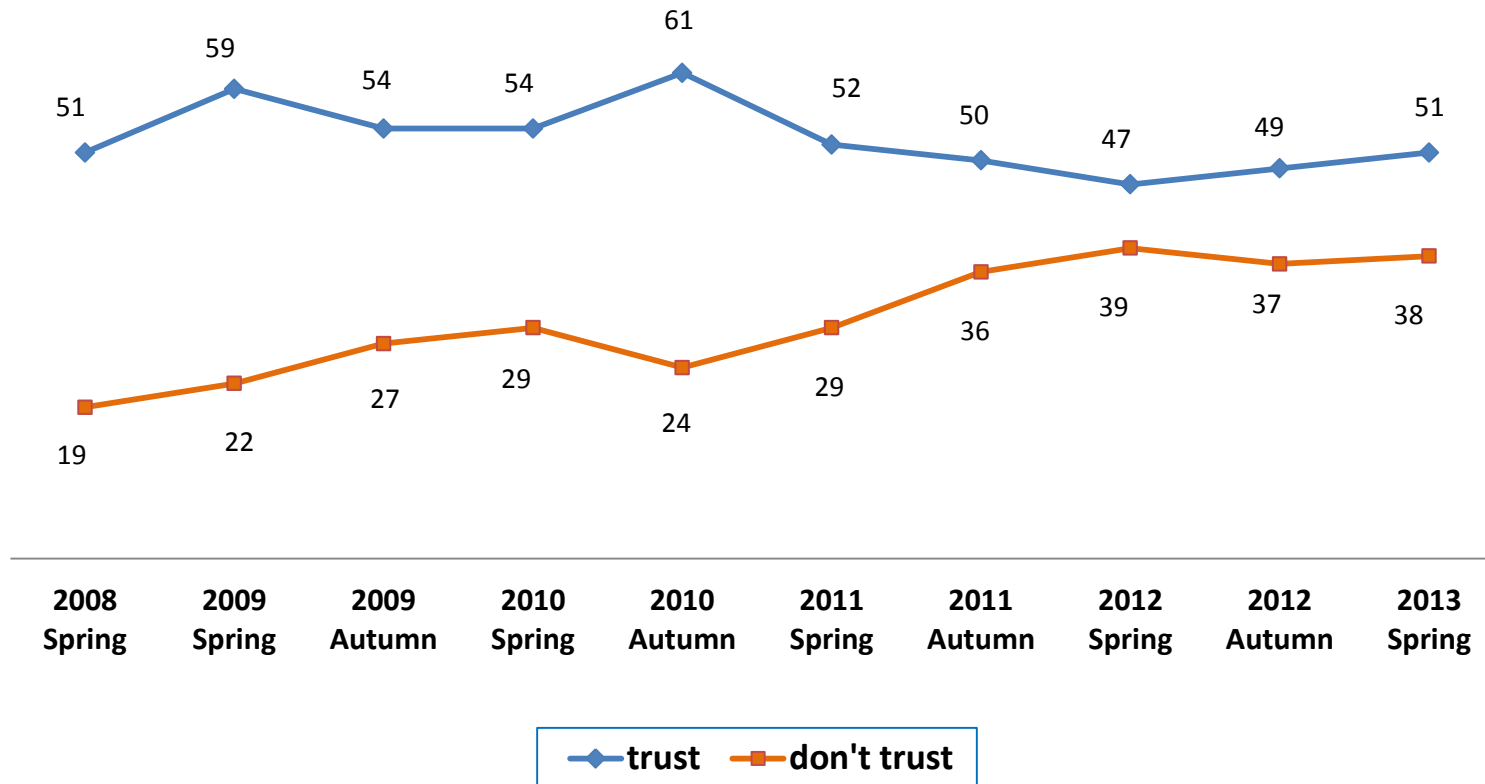
	Tend to trust	Tend not to trust
Bulgaria	54%	28%
Malta	53%	29%
Lithuania	51%	38%
Belgium	51%	45%
Hungary	48%	51%
Estonia	47%	46%
Romania	46%	43%
Slovakia	45%	43%
Luxembourg	45%	50%
Finland	43%	52%
Poland	41%	54%
Netherlands	39%	51%
Latvia	37%	58%
Sweden	36%	60%

	Tend to trust	Tend not to trust
Austria	35%	55%
Czech	35%	60%
France	34%	57%
Slovenia	34%	63%
Eu27	31%	60%
Germany	29%	61%
Ireland	29%	61%
Italy	25%	61%
Portugal	24%	71%
UK	20%	68%
Greece	19%	80%
Spain	17%	75%
Cyprus	13%	83%

Tend to trust or tend not to trust the European Union: EU average, %



Tend to trust or tend not to trust the European Union: Lithuania, %



Thank you!